



# ABOUT ELMIRA

Live, Work, Learn, and Relax in the City of Elmira

Chemung County  
New York



## Business & Industry

- About Elmira Home
- Area Attractions
- Entertainment
- Sports & Recreation
- Museums & Culture
- Annual Events
- Business & Industry**
- Community Websites
- Demographic Information
- Education
- Hospitals & Medical Care
- Housing Opportunities
- Local Accommodations
- Restaurant Directory
- Riverfront Planning
- Submit Restaurant
- Transportation
- Youth Activities

[Back to City Homepage](#)

- Contact City Hall
- Press Room
- Community Calendar
- Photo Galleries
- Elmira Maps
- E-Government

Bookmark & Share




Welcome

**A Great Place to Do Business**

**A Great Place to Learn**

**A Great Place to Enjoy**

**A Great Place to Live**

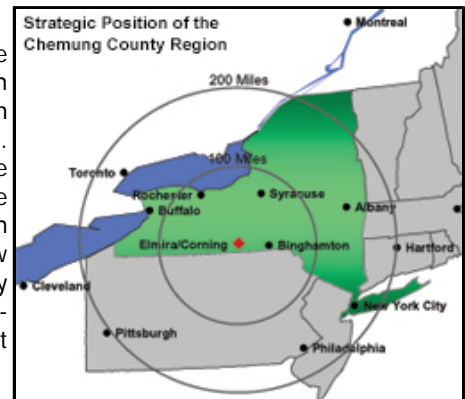
Go To



**Join Us In the Southern Tier | Manufacturing | Commercial Retail  
Economic Development | Labor Force**

### Join Us In the Southern Tier

The City of Elmira and Chemung County are committed to the process of development and growth while still working to maintain the friendly hometown atmosphere that so many citizens find appealing. Over the years, Chemung County and Elmira have seen great changes in the driving forces behind the local economy and once again are going through another period of change and growth. New businesses are attracted by the benefits of relatively low cost real estate, the friendly and hard working-people, and a community that makes you feel right at home. We welcome you to join us.



### Manufacturing

Manufacturing is a core component of the Chemung County economy today. Access to highways, air and rail service, telecommunication networks, and a diverse work force allows local manufacturers to compete on a global scale. Elmira is strategically located within 200 miles of national and international shipping ports in New York City, Pittsburgh, and Toronto, reducing shipping costs for local manufacturers.

Local manufacturers produce a wide variety of raw goods and finished products that are shipped all over the world:

The **Hilliard Corporation** is an Elmira manufacturer that makes over 16,000 different specialized one-of-a-kind products for businesses all over the world.

**Kennedy Valve**, a division of McWane Corporation, manufactures valves and fire hydrants at its plant on East Water Street in Elmira.

**Eastern Metal, USA Sign, and the Sign Man** manufactures interior and exterior signs, including the City of Elmira historical entrance sign, erected on E. Church Street in 2004.

**Creative Orthotics and Prosthetics** custom designs and manufactures orthotic and prosthetic devices for individuals.

Spanish manufacturer, **CAF**, calls Elmira Heights its headquarters for operations in North America where it constructs rail cars for the transit systems of the cities of Pittsburgh and Sacramento.





# Elmira DOWNTOWN

[Home](#) [About Us](#) [Events](#) [Experience Downtown](#) [Programs](#) [News](#) [Links](#)

## Downtown Map

The City of Elmira's Downtown Business Improvement District is a 52-block area on both sides of the Chemung River. North of the River, the BID is bordered on the west by Columbia Street; on the north by Clinton Street; and on the east by Madison Avenue. South of the River, the district is bordered by Main Street on the west and Pennsylvania Avenue and Sly Streets on the southeast. All properties within these boundaries, as well as properties situated on the perimeter, are member properties of the Business Improvement District.



## Select One

Print this Page

Email this Page

Bookmark Page

Set as Home Page

Problem with Webpage

Email the Webmaster



**Vulcraft**, a division of NuCor, manufactures steel joists, joist girders, steel floors, and roof decks at the new plant in the Town of Chemung.

**Hardinge Incorporated** is an international company with corporate headquarters located in Horseheads. Hardinge is a world-renowned and respected manufacturer of precision machine tools.

**Schweizer Aircraft** in nearby Big Flats manufactures helicopters, surveillance aircraft, and aviation parts. Schweizer is a contractor for the federal government, constructing unmanned helicopters for the military.

Also in Big Flats, **Corning Life Sciences** manufactures laboratory glassware, **IST** creates nuclear instrumentation and radiation tolerant cameras, and **Orthstar** is a software engineering company that creates software to automate and simulate systems.

## Commercial Retail

Commercial retailers meet consumer needs and fill several shopping plazas and commercial districts throughout the county. Here you will find the perfect mix of city convenience and small-town living with an eclectic collection from hometown mom and pop shops to nationwide retail chain stores. Hot spots for shopping include Downtown Elmira, Tops Plaza in Southside Elmira, Wegmans Plaza in Northside Elmira, Grand Central Plaza in Horseheads, and the Arnot Mall and Consumer Square in Big Flats.

### Downtown Elmira



Take a walk through Downtown Elmira and stop into the Community Bookstore to grab coffee and the morning Star-Gazette. Down the block, stop for lunch in Barb's Soups On Kitchen. Pick up a special gift and card inside Cappy's. Find the perfect pair of shoes in Panosian's Shoe Store in Langdon Plaza. Browse the shops along Victorian Row in the Historic Near Westside Neighborhood District. Downtown Elmira is filled with small shops and offices for lawyers, doctors, real estate agents, and financial consultants.

»[Elmira Downtown Development Business Directory](#)

### Tops Plaza



Tops Plaza, located at the intersection of South Main Street and Hudson Street, includes Top Friendly Markets grocery store, Hollywood Video, and the Dollar Tree. Across the street is a strip of businesses on South Main Street that includes Gerould's Pharmacy, Kerbein Printing and Signs, Ginos Pizzeria, the China Café, and more.

### Wegmans Plaza

Wegmans Plaza, located on Clemens Center Parkway North of Washington Avenue, includes Wegmans Food Markets, the UPS Store, Ray's Jewelers, H&R Block, First Heritage/Corning Credit Union, and more.



### Grand Central Plaza

Grand Central Plaza, located at the intersection of Center Street and Route 17 in Horseheads includes K-Mart, Raymour and Flanigan Furniture, Save-A-Lot Grocery Store, Radio Shack, Champion Factory Outlet Store, Peter Harris Clothing, and many more.

### Arnot Mall

The Arnot Mall, located in Big Flats off exits 51 and 51A of Interstate 86, includes several large anchor stores such as Sears, JC Penney, Macy's, and Bon Ton, several smaller shops and retail chain stores, a 10 screen movie theater, and food court.

»[Visit the Arnot Mall website](#)

### Consumer Square



Consumer Square, located off exit 51 of Interstate 86, is a retail center with several large anchor stores including Wal-Mart, Sam's Club, Tops, Dick's Sporting Goods, Staples, Barnes and Noble, and Lowes surrounded by smaller retail shops.



### Business Directories

For more information on businesses and retailers in the Elmira area, use these resources:

- » [Elmira Downtown Development Downtown Directory](#)
- » [Chamber of Commerce Directory](#)
- » [Yahoo Business Directory](#)

### Economic Development

Development in the area is guided by City and County leaders working together with local economic development organizations such as Southern Tier Economic Growth, Elmira Downtown Development, and the CCC Small Business Development Center. We pride ourselves on operating the way businesses do - proactively anticipating opportunities and quickly responding to challenges in innovative ways.

### Elmira Empire Zone Benefits

The Elmira Empire Zone provides incentives to manufacturers, and commercial retailers to locate a new business within the Empire Zone. Incentives include Tax Reduction Tax Credits, Real Property Tax Credits, Sales Tax Exemptions, Sales Tax Refunds, Wage Tax Credits, and discounts on utilities.

- » [more from Southern Tier Economic Growth](#)
- » [more from New York Empire Development](#)



The Elmira Empire Zone has a very successful record of drawing new businesses into Chemung County. The Empire Zone has been effectively used to fill Trinity Industrial Park, build a **Vulcraft** plant in the **Town of Chemung**, construct a 72,000 square foot manufacturing facility for SYNTHES USA, and open the **First Arena** hockey and entertainment arena in Downtown Elmira. The Elmira Empire Zone has resulted in the establishment of 59 new businesses, the retention of 23 existing businesses, and the creation or retention of 7,263 jobs in the City of Elmira.

### Southern Tier Economic Growth



STEG plans, promotes, and implements economic development programs and services in Chemung County. STEG and the City of Elmira work together to administer the Elmira Empire Zone and provide financial assistance to new and existing businesses. The Commercial Loan Program provides low interest loans to businesses in the City of Elmira that create full-time jobs for low to moderate income individuals. STEG is also responsible for marketing the Elmira region to attract new businesses and developers to invest in our region.

- » [more from Southern Tier Economic Growth](#)



### Elmira Downtown Development

EDD provides technical and financial assistance to businesses located within the 52 block area known as the Elmira Downtown Development District. EDD supports downtown businesses through façade enhancement, sign design, filling vacant properties, and planning special events to attract shoppers into the Downtown District. Some of EDD's special events include Wisner Market, the Downtown Showcase, Music on the Riverfront, and Downtown CleanUp. The goal of EDD is to make Downtown Elmira more attractive and viable for business development.

- » [more from Elmira Downtown Development](#)



### Chemung County Chamber of Commerce

The Chamber of Commerce represents the business community in the

promotion of the prosperity and the quality of life throughout Chemung County. The Chamber sponsors events to attract tourists and consumers into Chemung County. The Chamber also sponsors events to allow business owners to network with other business owners to make connections and discover new opportunities.

[»more from the Chemung County Chamber of Commerce](#)

### CCC Small Business Development Center



Corning Community College's Small Business Development Center specializes in providing direct one-to-one confidential management counseling to entrepreneurs and business owners. Technical, managerial, marketing, or financial advice is available without a charge to any new or existing business.

[»more from CCC Small Business Development Center](#)

### Available Properties

There are several online resources available to find a property to rent or lease to start a small business, expand an existing business, establish a corporate headquarters, or build a new manufacturing facility. Elmira Downtown Development maintains a current listing of Available Properties in the downtown district on their website. This listing can be searched and sorted to more easily find the property that suits your needs. Southern Tier Economic Growth maintains a listing of available sites in the Empire Zone on their website.

[»Elmira Downtown Development Available Properties](#)

[»STEG Available Sites](#)

### Labor Force

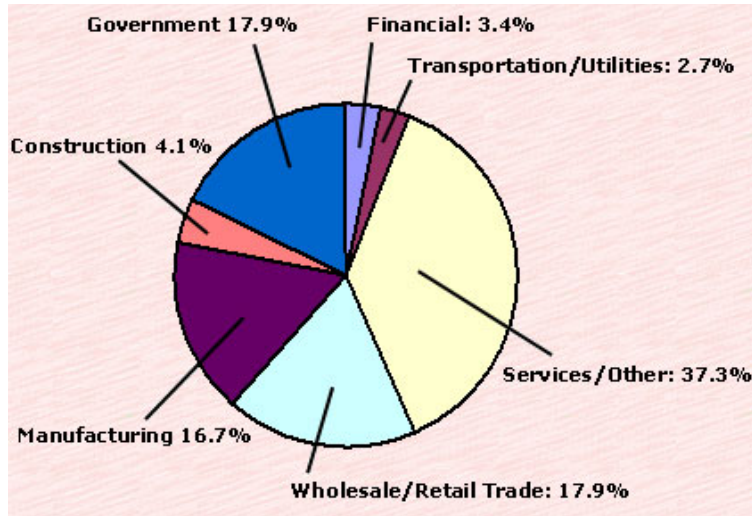
The workforce is known for its outstanding work ethic, perseverance and pride. Several businesses which located here in the late 1970's have been stable employers into the 21st Century and are very pleased with their workforce.

### Major Employers in the Elmira-Chemung County Region

Elmira City School District	Primary and Secondary Education	1500
Arnot Ogden Medical Center	Hospital and Medical Services	1400
Horseheads School District	Primary and Secondary Education	850
Elmira Correctional Facility	Corrections	850
St. Joseph's Hospital	Hospital and Medical Services	780
Hardinge Brothers, Inc.	Machine Tool Manufacturing	580
General Revenue Corp.	Debt Collection Services	500
Schweizer Aircraft	Aircraft Construction	470
Southport Correctional Facility	Corrections	450
Hilliard Corp.	Manufacturing	436
SCT BOCES	Education & Career Training	400
Elmira College	Higher Education	400
Chemung Canal Trust Company	Banking and Financial Services	400
Kennedy Valve	Fire Hydrant Manufacturing	400
Anchor Glass Container Corp.	Bottle Manufacturing	370
Elcor Health Services	Medical Services	300
Dalrymple Contracting	Mining	300
Corning Inc.	Labware, Scientific Apparatus	300
Capabilities Inc.	Human Services	300
Chemung ARC	Human Services	300
Thomas & Betts	Electronics & Manufacturing	280
F.M. Howell & Company	Paper and plastic packaging	265
Synthes USA	Healthcare products	250

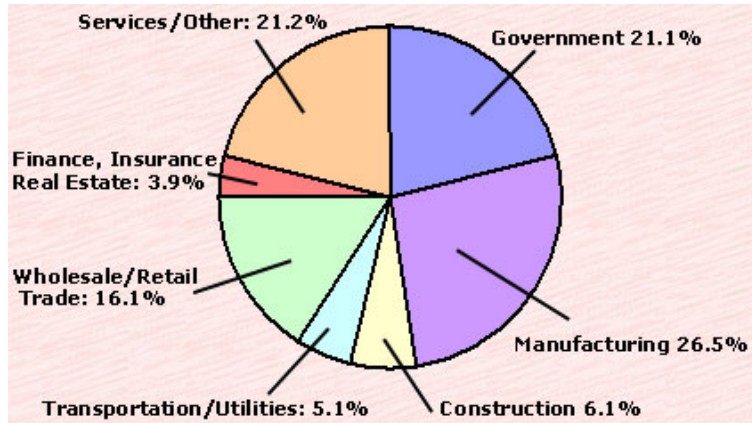
Source: Chemung County

### Employment by Industry



Source: NYS Department of Labor 2002

### Annual Payroll by Sector



Source: NYS Department of Labor 2000

### Labor Force and Employment (Average Annual)

Year	Civilian Labor Force	Employed	Unemployed	Unemployment Rate
1998	45,000	43,100	1,900	4.2
1999	44,300	42,200	2,200	4.9
2000	42,800	40,700	2,100	4.8
2001	42,000	39,800	2,200	5.3
2002	43,200	40,200	3,000	6.8

Source: NYS Department of Labor 2002

### Field of Employment (Employed Persons 16 and Over - 2000)

Management/Business	3,760	9.2%
Professional & Related	7,210	17.7%
Technicians	1,463	3.6%
Sales	4,430	10.9%
Administrative Support	5,469	13.4%

Service	7,518	18.5%
Production	4,047	9.9%
Transportation	2,174	5.3%
Construction	2,908	7.1%
Farm/Fishing/Forestry	241	0.6%
Other	1,480	3.6%

Source: NYS Department of Labor 2000

### Industry Profile

2001 Annual Average	Employees	Establishments	Payroll (\$M)	Wages
Total	41,004	2,024	1,176	\$28,668
Manufacturing	7,934	110	289	\$36,384
Durables	6,873	85	257	\$37,349
Nondurables	1,060	25	32	\$30,147
Services	13,953	712	368	\$26,353
Retail Trade	8,350	576	126	\$15,128
Wholesale Trade	1,882	129	66	\$34,867
FIRE	1,405	180	46	\$32,810
Government	3,267	41	125	\$38,169
Construction	2,018	153	78	\$38,782
Trans/Public Utilities	1,937	81	73	\$37,841

Source: NYS Department of Labor 2001

### Educational Profile

Total HS Enrollment	13,472
Dropout Rate	6.5%
Graduates Post HS Plans	
-4 Year School in NY	23.9%
-4 Year School outside NY	12.9%
-2 Year School in NY	37.7%
-2 Year School outside NY	1.5%
-Employment	14.8%
-Military Service	4.7%
-Other	2.4%



Source: NYS Department of Education 2000-2001

The information provided on these pages is for informational purposes and should not be considered an endorsement by the City of Elmira. If you believe we missed something or you have information that could be added to these pages, please email the webmaster by [clicking here](#).



| [About Elmira](#) | [Elmira City Hall](#) | [Fire Department](#) | [Police Department](#) | [Public Works](#) | [Animal Shelter](#) |  
| [Mark Twain Golf Course](#) | [Downtown Development](#) | [Permits & Applications](#) | [Pages in History](#) |

**City Employees:** [Outlook Web Access](#)  
**Migrated Mailboxes:** [County Outlook Web Access](#)



# Elmira DOWNTOWN

[Home](#) [About Us](#) [Events](#) [Experience Downtown](#) [Programs](#) [News](#) [Links](#)

## **Environment Programs**

### **GRANTS FOR DOWNTOWN BUSINESSES!**

Elmira Downtown Development offers 2 grant programs for owners interested in improving their properties. Applications for both programs are now available.

The goal of these program is to eliminate the cluttered and blighting effect of inappropriate facades;

to enhance the streetscape; and to leverage private improvements while making revitalization efforts affordable, creative, and community-based. The programs offer matching grants to assist building and business owners in making permanent exterior improvements to their properties.

Grants are available up to 50%; all projects MUST meet program guidelines.

### **Related Events**

[Downtown Clean-up](#)

[Operation Green Streets](#)



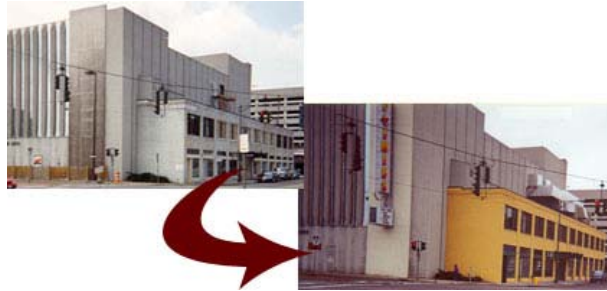




# Elmira DOWNTOWN

[Home](#) [About Us](#) [Events](#) [Experience Downtown](#) [Programs](#) [News](#) [Links](#)

## Façade Improvement Program



This program makes funds available for larger-scale building improvements. Applicants are eligible for up to \$5,000 in matching funds in order to improve the appearance of building facades in downtown Elmira. Design assistance is also available. This program is also funded by the City of Elmira.

Examples of eligible work include the following:

- Masonry Cleaning
- Graffiti Removal
- Wall Repair (inc. decorative details)
- Painting
- Window Repair & Replacement
- Cornice Restoration

Additionally, minor building improvements necessitated by the facade project may be eligible. For a copy of the program guidelines and an application, please visit our office.

Applicants are required to meet with staff for a consultation.



# Elmira DOWNTOWN

[Home](#) [About Us](#) [Events](#) [Experience Downtown](#) [Programs](#) [News](#) [Links](#)

## Signage Improvement Program



Applicants are eligible for up to \$1,500 in matching funds in order to improve the appearance of signs and awnings in downtown Elmira. Design assistance is also available. This program is funded by the City of Elmira and is administered by EDD.

Examples of eligible work include the following:

- new signs
- repair of existing signs
- replacement of signs
- removal of signs
- awnings
- window enhancements
- lighting associated with sign projects

Additionally, minor building improvements necessitated by the sign project may be eligible. For a copy of the program guidelines and an application, please visit our office. Applicants are required to meet with staff for a consultation.



# Elmira DOWNTOWN

[Home](#) [About Us](#) [Events](#) [Experience Downtown](#) [Programs](#) [News](#) [Links](#)

## **New York Main Street Program**

The New York Main Street provides financial resources and technical assistance to communities to strengthen the economic vitality of the State's traditional Main Streets and neighborhoods. The NY Main Street grant program provides funds from the New York State Housing Trust Fund Corporation (HTFC) to units of local government, business improvement districts, and other not-for-profit organizations that are committed to revitalizing historic downtowns, mixed-use neighborhood commercial districts, and village centers.



Learn more at [www.dhcr.state.ny.us](http://www.dhcr.state.ny.us)